



HMA LIFT 220



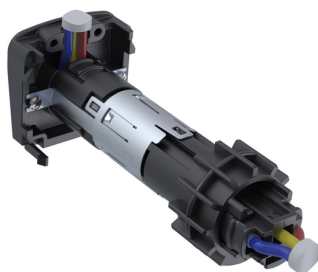
Suspension arm with continuous height adjustment, non-impact rotation and integrated power supply

- Default colours
 - Cover: RAL 9016 (Traffic white)
 - Special colours on request
- Restraint-guided load suspension at head joint
- Usual interfaces at head joint (Standard market practice)
- Internal cable ducting
- 330° swivel range with arrestor
- 360° swivel range with turning connector, 3 pin 230V/10A (option)
- Low maintenance

Lift length	910 mm
Dead weight	5.8 kg
Cable duct	2 cables with a maximum diameter of 9 mm
Vertical stroke	1174 mm (+564/-610)
Loading weight range	5 - 21 kg

ROTARY PLUG

52295-1010X



3-pin rotary plug for non-stop rotation

- Rotary plugs in different diameters
 - ▶ Ø 23,8 mm
 - ▶ Ø 27,7 mm
 - ▶ Ø 29,2 mm
- 240V / 16A