



HMA LIFT 551



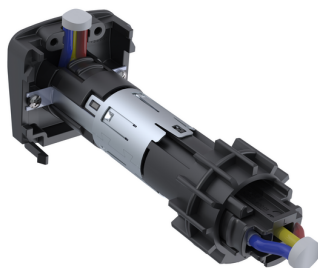
Continuous height adjustment suspension arm with cardanic load suspension for screens, monitor arrays or medical equipment

- Default colours
 - Cover: RAL 9016 (Traffic white)
 - Special colours on request
- Incrementally adjustable height arrestor
- Stroke locking with operator release (option)
- Cardanic load suspension on head joint. The mounted load under the lift system „swings“ automatically through the cardanic joint into the centre of gravity
- Internal cable ducting
- Overhead carriage with cable management and electrical brakes (option)
- Low maintenance

| | |
|-----------------------------|--------------------|
| Lift length | 1000 mm |
| Dead weight | 22 kg |
| Cable duct | 30 x 30 mm |
| Vertical stroke | 800 mm (+300/-500) |
| Loading weight range | 12 - 64 kg |

ROTARY PLUG

52295-1010X



3-pin rotary plug for non-stop rotation

- Rotary plugs in different diameters
 - ▶ Ø 23,8 mm
 - ▶ Ø 27,7 mm
 - ▶ Ø 29,2 mm
- 240V / 16A