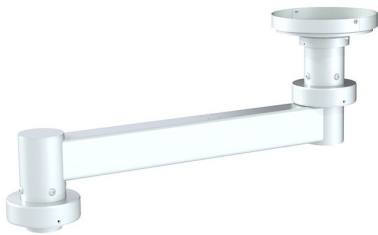




HMA M250



- Default colours
 - Pipes: RAL 9016 (Traffic white)
 - Components: RAL 9016 (Traffic white)
 - Special colours on request

Safety Class

IP 54 DIN EN 60529

U-EXTENSION ARM



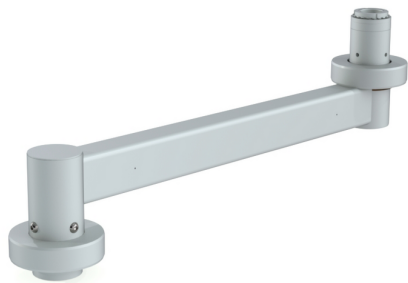
WALL JOINT



CEILING MOUNTING



Z-EXTENSION ARM



Z-Extension Arm