



HMA M300



- Default colours
 - Pipes: RAL 9016 (Traffic white)
 - Components: RAL 9016 (Traffic white)
 - Special colours on request

Safety Class

IP 54 DIN EN 60529

HMA I-400 U-EXTENSION ARM

44030-0XXXX-XXXXXXX



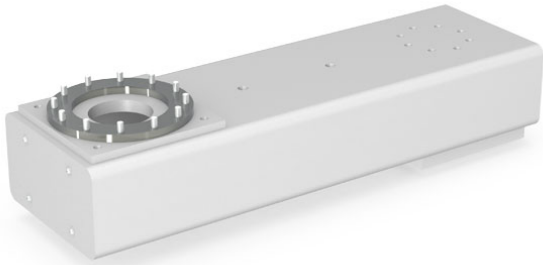
U-extension arm made of high-quality welded steel construction

- Default colour
 - RAL 7035 (Light grey)
 - Special colours on request
- Overhead-mounting possible

Product code	Description
44030-00500-1703510	HMA I-400 U-Extension Arm 500 mm, 35kg, Colour: RAL 7035
44030-00750-1703510	HMA I-400 U-Extension Arm 750 mm, 43kg, Colour: RAL 7035
44030-01000-1703510	HMA I-400 U-Extension Arm 1000 mm, 50kg, Colour: RAL 7035
44030-01500-1703510	HMA I-400 U-Extension Arm 1500 mm, 65kg, Colour: RAL 7035
44030-02000-1703510	HMA I-400 U-Extension Arm 2000 mm, 80kg, Colour: RAL 7035

HMA I-400 Z-EXTENSION ARM

44031-0XXXX-XXXXXXX



Z-extension arm made of high-quality welded steel construction

- Default colour
 - RAL 7035 (Light grey)
 - Special colours on request

Product code	Description
44031-00500-1703510	HMA I-400 Z-Extension Arm 500 mm, 35kg, Colour: RAL 7035
44031-00750-1703510	HMA I-400 Z-Extension Arm 750 mm, 43kg, Colour: RAL 7035
44031-01000-1703510	HMA I-400 Z-Extension Arm 1000 mm, 50kg, Colour: RAL 7035
44031-01500-1703510	HMA I-400 Z-Extension Arm 1500 mm, 65kg, Colour: RAL 7035
44031-02000-1703510	HMA I-400 Z-Extension Arm 2000 mm, 80kg, Colour: RAL 7035